

TOPOGRAPHICAL SURVEY

SITUATE IN THE BUFFALO CITY METRO. MUNICIPALITY
IN THE ADMINISTRATIVE DISTRICT OF EAST LONDON
PROVINCE OF THE EASTERN CAPE

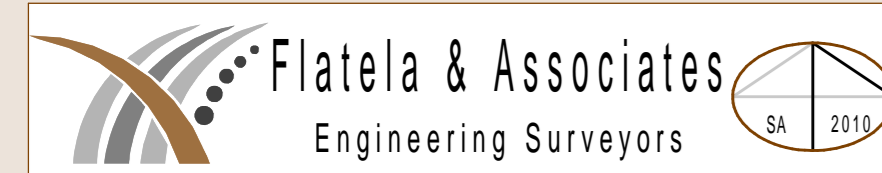
LEGEND

- BOTTOM BANK
- BOTTOM DRAIN
- BOUNDARY BEACON
- CONCRETE WALL/SLAB
- CULVERT
- DM
- DRAIN TOP
- ELECTRIC MANHOLE
- EDGE OF FAR
- FENCE
- GATE
- INVERT LEVEL
- MANHOLE
- PIPE INVERT
- PIPE MARKER
- RESERVOIR
- RAIL GUARD
- SIGN POST
- SWAMP
- STORM WATER DRAIN
- TOP BANK
- TOP KERB
- TELKOM LINE
- TRACK
- WALL
- WATER VALVE
- WORKING POINT



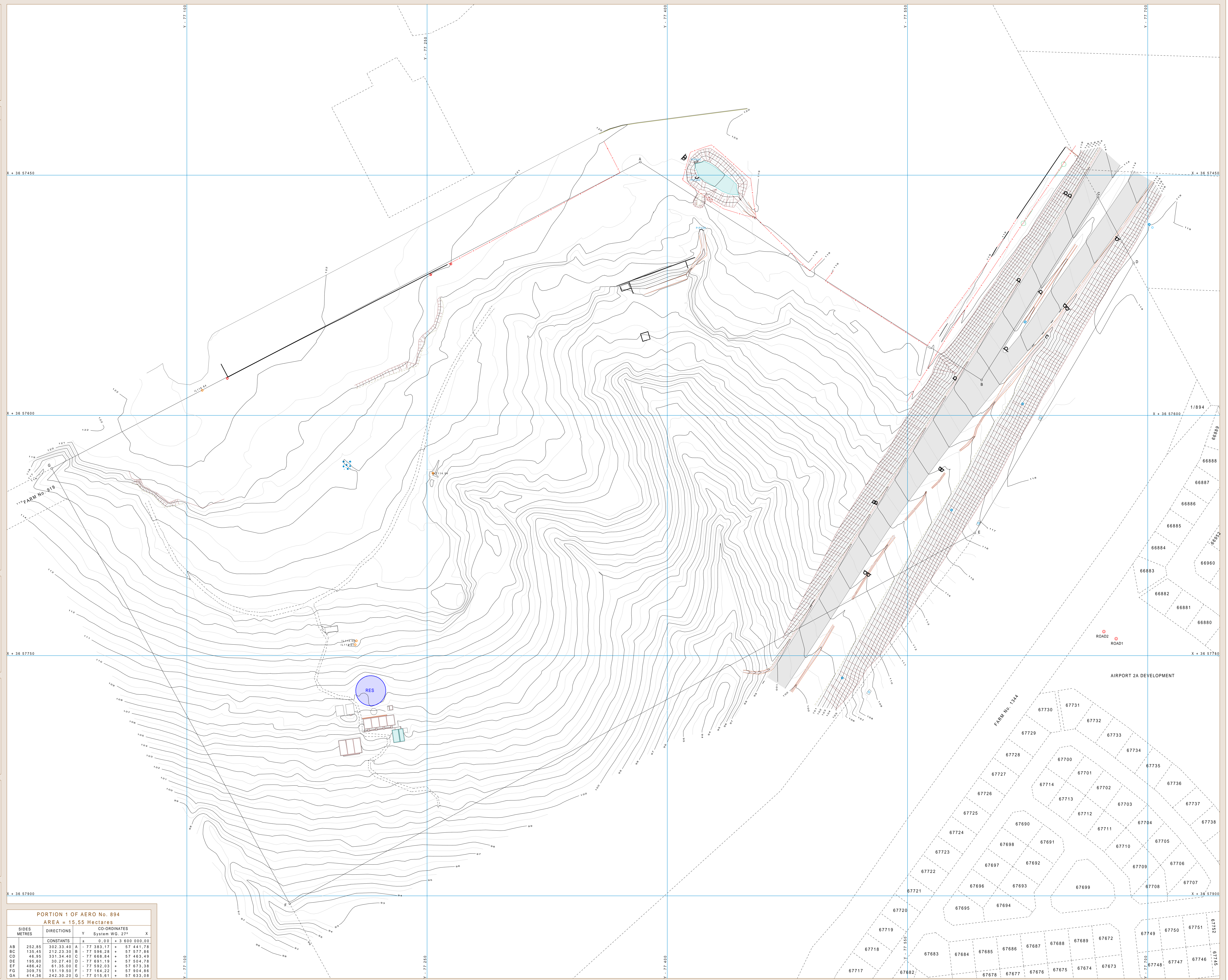
PROJECT : TOPOGRAPHICAL SURVEY OF
PORTION 1 OF AERO No. 894
E.L. AIRPORT

SURVEY DATUM : WGS 84
CENTRAL MERIDIAN : LONGITUDE 27° EAST
LEVEL DATUM : MEAN SEA LEVEL
CONTOUR INTERVAL : 0.5 METRES
SCALE : 1 / 750
DATE : OCTOBER 2014
REF : Z:\POPS\MMS\TACHE\PF639TAC



FLATELA REGISTERED AND MEMBERS OF THE SOUTH AFRICAN GEOMATICS INSTITUTE
(Tel: 043 740 2602/Fax: 043 740 5507/P.O. Box 386, Gonubie 6256)
(No. 3 Third Avenue, Gonubie 6257/E-Mail: admin@flatela.co.za)

PROPERTY SUBDIVISION AND SECTIONAL TITLES
TOPOGRAPHICAL AND ENGINEERING SURVEYS
TOWNSHIP AND DEVELOPMENT SURVEYS
GEOGRAPHIC INFORMATION SYSTEMS
MAPPING AND LAND INFORMATION



PORTION 1 OF AERO No. 894
AREA = 15.55 Hectares

SIDES	DIRECTIONS	Y	CO-ORDINATES	X
METRES			System WG. 27°	
AB	CONSTANTS	0.00	+ 3 600 000.00	
BC		302.33.40	A - 77 383.17 + 57 441.78	
CD		212.23.30	B - 77 596.28 + 57 577.86	
DE		331.34.40	C - 77 668.84 + 57 463.49	
EF		30.27.40	D - 77 691.19 + 57 504.78	
FG		61.35.00	E - 77 592.03 + 57 673.38	
GA		151.19.50	F - 77 164.22 + 57 904.86	
		242.30.20	G - 77 015.61 + 57 633.08	